

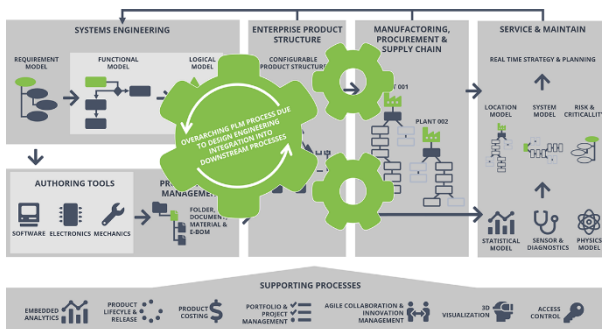
SAP PDM INTEGRATION TO PTC WINDCHILL

Seamless integration of
PTC Windchill
into SAP PLM

OVERCOME SYSTEM BOUNDARIES

The SAP product data management integration to PTC Windchill enables seamless integration of your PTC® Windchill® system into your SAP system.

The focus of the integration of PTC Windchill in SAP, besides the automated exchange of development data, is on the seamless integration of CAD and PLM development processes in SAP ERP. The SAP product data management integration to PTC Windchill enables you and your company to map complete CAD and PLM processes across system boundaries.



Processes across system borders for the complete product lifecycle management

HIGHLIGHTS

- PLM Strategy – Fully integrate PTC Windchill and SAP into your corporate PLM strategy
- Best of both Worlds – Your PLM processes determine the depth and function of integrating PTC Windchill into SAP ERP. Determine which system is the leading instance on process level
- Out of the box use cases – Benefit from the high degree of standardization of our solution
- Use application scenarios developed in cooperation with our customers for various use cases
- Bidirectional data exchange – Ensure the consistency of your CAD and PLM processes between PTC Windchill and SAP ERP
- SAP Visual Enterprise – Create neutral formats of your CAD data directly from PTC Windchill and visualize them across the enterprise with SAP Visual Enterprise

HOW DO YOU WORK TODAY?

The SAP product data management integration to PTC Windchill supports classic cross-application scenarios. Depending on the scenario, the solution offers several features and benefits based on your CAD / Dynamic Document and/or Part information.

CAD / DYNAMIC DOCUMENT SCENARIO

Do you exclusively work with CAD data and CAD structures (CAD / Dynamic Documents) in PTC Windchill? The CAD / Dynamic Document scenario offers you the full integration of PTC Windchill into all necessary SAP objects based on the CAD / Dynamic Documents and their structure.

PART SCENARIO

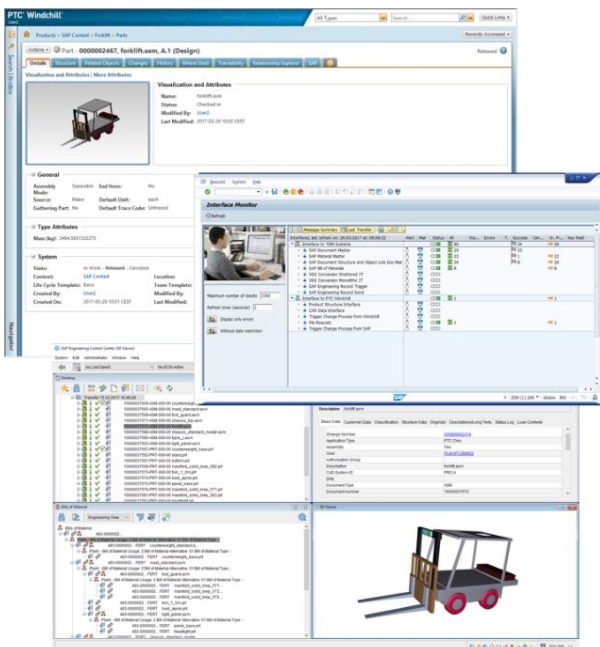
Do you manage product structures in PTC Windchill? The Part scenario is the right choice for you! SAP materials, BOMs, document info records, and other objects are created based on your existing Part structures.

CHANGE PROCESS

In all scenarios the SAP product data management integration to PTC Windchill supports a bidirectional change process, either starting in PTC Windchill or in SAP. Regardless of the change process, the change made using the change number is recorded securely and reliably in SAP.

FEATURES

- Create and change the material master
- Create and change the material BOM
- Process the changes from PTC Windchill to SAP
- Hand over the change process from SAP to PTC Windchill and return it to SAP
- Create and change the document structure
- Automated creation and maintaining of the object link between the material master and the document info record
- Synchronize attributes and characteristics bi-directional
- Transfer neutral files to SAP



Full support for the SAP PLM data model and the downstream processes

BENEFITS

- Support of data modeling processes in SAP
- Display information about SAP objects directly in PTC Windchill
- Monitor the creation, change and the flexible mapping of the objects in SAP
- Enable barrier-free collaboration between product development and SAP ERP manufacturing control
- Automate the creation of master data
- Avoid redundancy with a "single source of truth"
- Enable secure end-to-end processes with consistent data
- Fast processing of your data through parallelization and serialization
- Asynchronous and synchronous communication between PTC Windchill and SAP
- Use a company-wide, controlled and documented change process
- Easily scale to the size of your company with the highly configurable architecture and technology foundation
- Overcome possible system dependencies
- Leave SAP ERP logic in SAP ERP
- Create transparency through detailed monitoring
- Central configuration and monitoring of the SAP product data management integration to PTC Windchill
- Enable the connection of your PTC Windchill processes with all relevant SAP ERP entities
- Take full advantage of an integration that does not require middleware
- Maintain the SAP product data management integration to PTC Windchill as an SAP standard price list product via the SAP Support Portal

© 2021 riess engineering gmbh or its affiliated company. All rights reserved. No part of this publication may be reproduced or transmitted in any form or for any purpose without the express written permission of riess engineering gmbh or its affiliated company. riess engineering is any products or services of riess engineering or its affiliated company mentioned in this publication as well as their respective logos are trademarks or registered trademarks of riess engineering or its affiliated company. All other names of products or services are trademarks or registered trademarks of their respective owners. See <https://www.riess.de/copyright> for more information on trademarks, copyrights and legal notices.



More information:
riess.de/windchill

